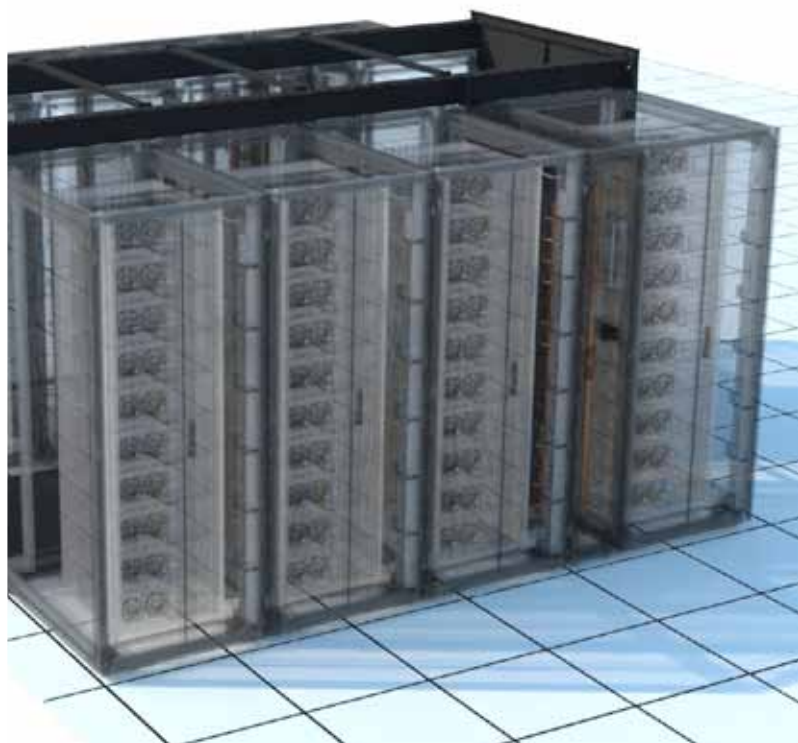
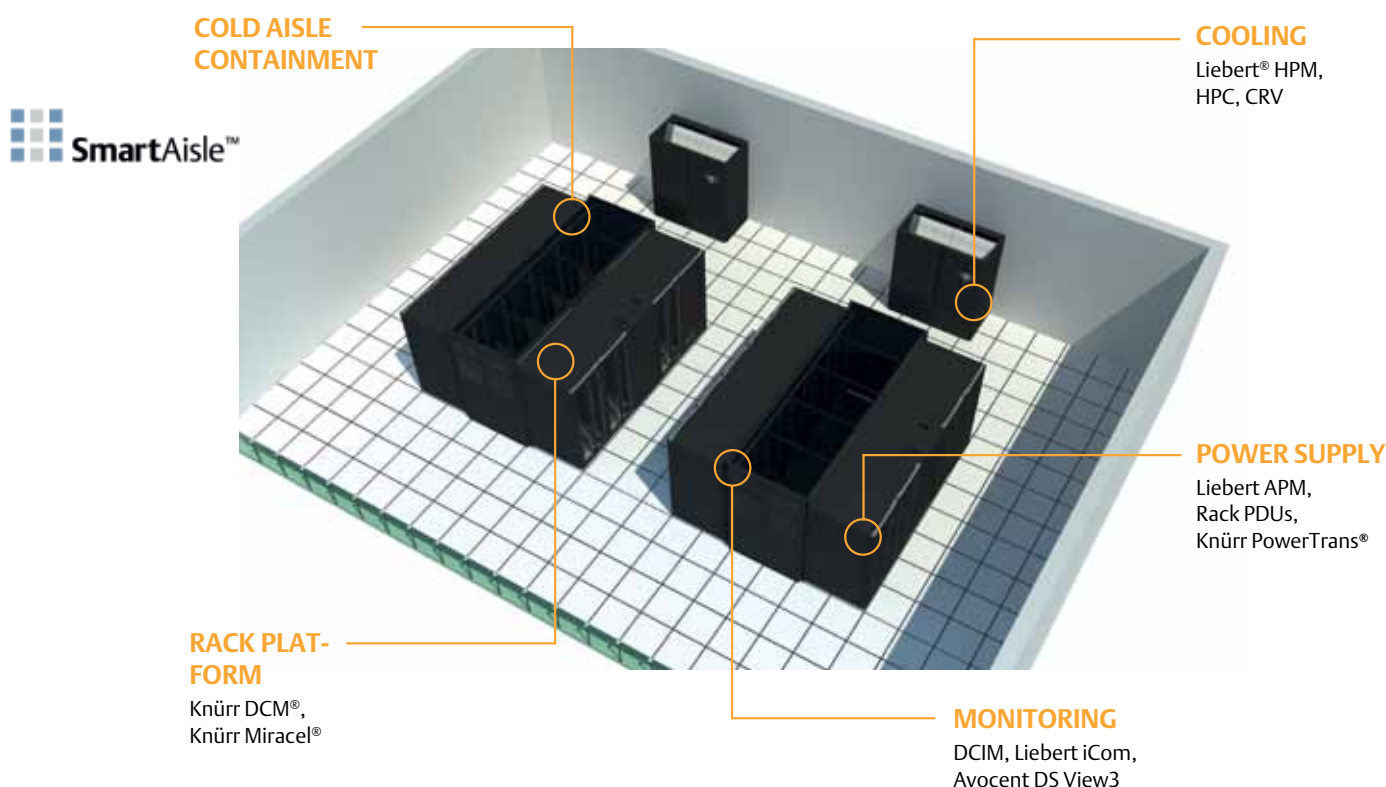


SmartAisle™ Containment

Energy-efficient Data-Center Cooling



SmartAisle™ – the comprehensive data-center solution



IT's most important response is the increasing independence of applications from within the IT infrastructure. Virtualization and cloud computing are today's buzzwords. Energy-efficient IT components and their dynamic control according to the applications' current needs form the hardware basis for this.

In terms of physical infrastructure the answer lies in the SmartAisle™ from Emerson Network Power. In the data-center, the SmartAisle™ forms the room, the power supply and the cooling system for servers, storage and the network. Choosing a comprehensive range of components that

are tailored to one another in every respect enables the physical infrastructure to be adapted to any need imaginable, since no data-center is like any other and no data-center remains unchanged for long.

The SmartAisle™ solution ensures optimal availability, efficiency and future-proofing.

Features

- Best failsafe capacity
- Ideal temperature for IT; no hot spots
- Minimum power consumption
- Easy to plan and run

Complete solution

- Racks
- Rack PDUs
- Power distribution
- UPS
- Cooling with iCOM control
- Enclosure
- Cable management
- Monitoring: cabinet and aisle
- DataCenter Infrastructure Management (DCIM)
- Commissioning and maintenance
- Other services

All active components have interfaces to a top-level infrastructure management system (trellis) which facilitates integrated monitoring, management and automation of the physical infrastructure.

Achieved energy savings through patented, controlled cold aisle containment in many projects (banks, insurance companies, industry etc.).



the green grid™

Green IT

- Reduction in CO₂ emissions through optimum energy efficiency.
- Very good PUE values are achieved, often better than 1.35.
- Compliance with the EU Code of Conduct.

SmartAisle™ – A form of containment proven to lead to substantial savings in energy costs

SmartAisle™ – the comprehensive data-center solution

Control from Emerson Network Power

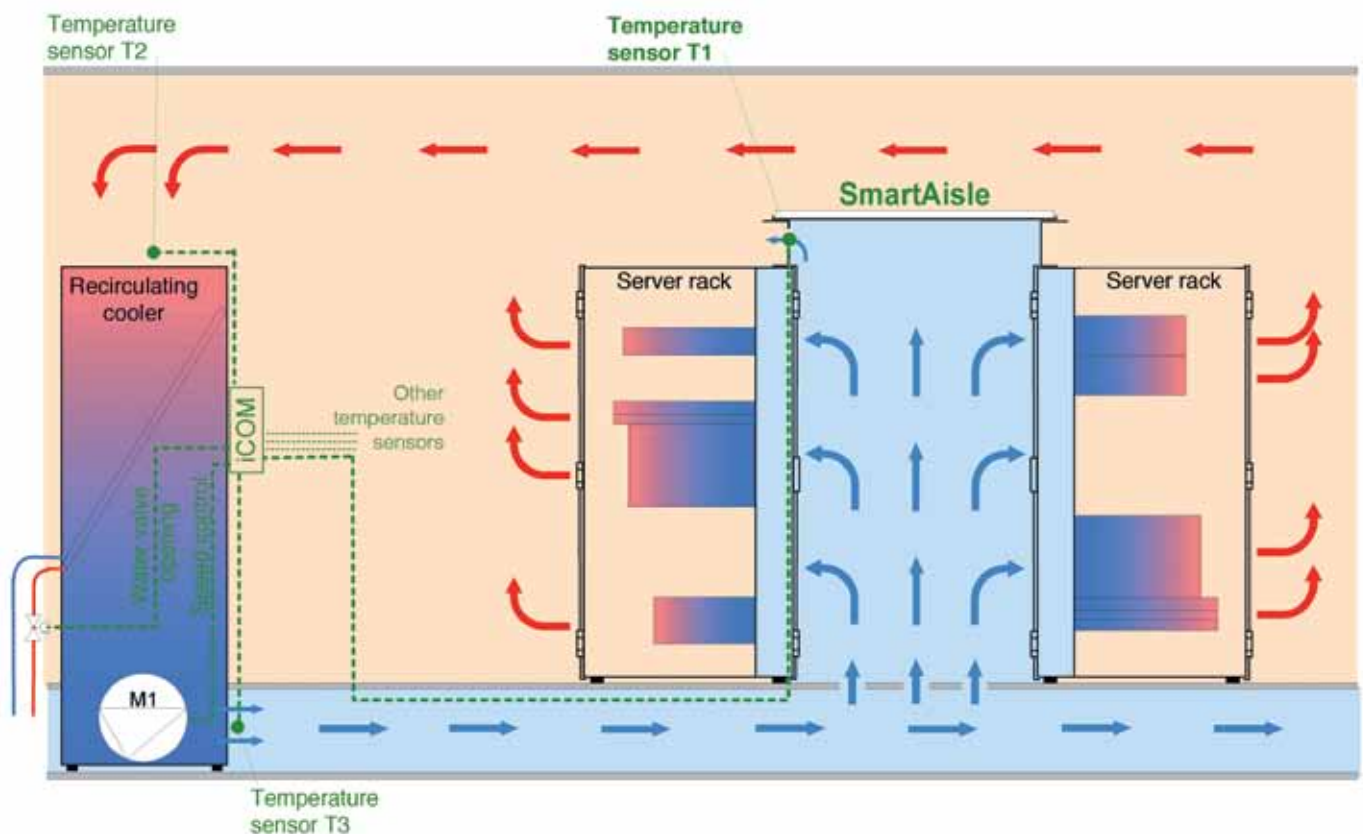


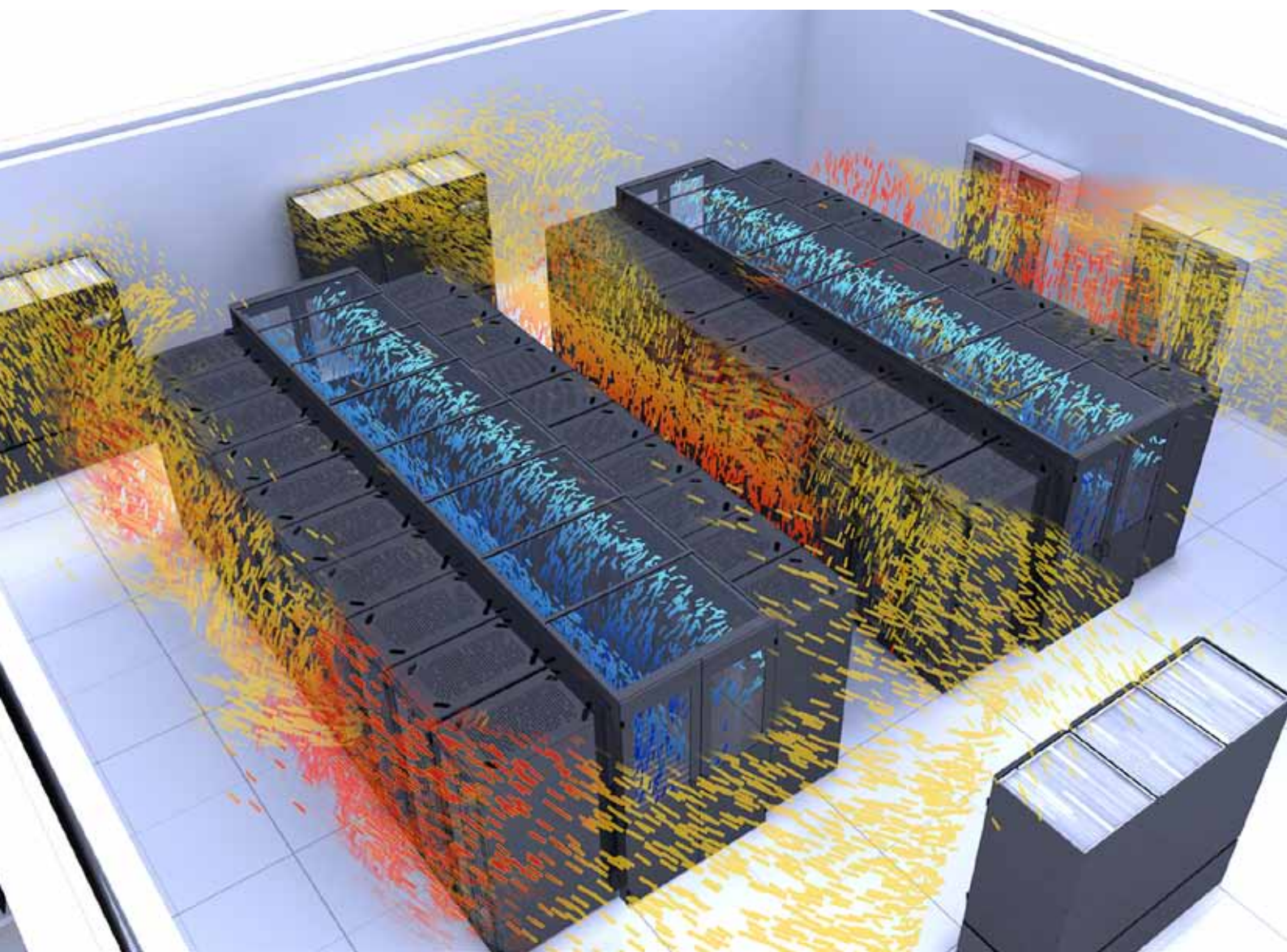
Due to rising power costs and increased environmental awareness, almost every operator's current objective is to operate their data-center as energy efficiently as possible.

Many already ensure the basic separation of cold air from warm air with dummy (blanking) panels, bushings for cable entry, cold aisle containment, etc. The data-center can be further optimized by adjusting the fan speed of the recirculated air devices. This is an essential and important factor for an energy-efficient data-center. The operator can save enormous power costs by choosing the most appropriate type of regulation.

The right choice can also increase availability. The failure of a device serving to recirculate air is compensated by increasing the speed of the other devices. In terms of control, there are two main principles in use – pressure control and control via the cold aisle temperature.

With the SmartAisle™ control principle, the cold aisle temperature, i.e. the temperature of the air supply to the servers, is used to control the fans which regulate the temperature in the room (see figure). This control principle is patented.





SmartAisle™ containment – systematically separating cold from warm air forms the basis of an energy-efficient data-center

SmartAisle™ – the comprehensive data-center solution

Overview of SmartAisle™ Containments



STANDARD

Standard product range:

- Aisle width 1,200 / 1,500 and 1,800 mm
- Rack height 2,000 and 2,200 mm

Features:

- Ideal for new data-centers and for retrofitting homogeneous cabinet aisles
- Industrial prefabrication makes for a highly economic solution
- Quick and easy to assemble on site



CUSTOMIZED

Features:

- Precisely fitted to cabinets and cabinet positions
- Suitable for retrofitting non-homogenous data-centers
- Combination with SmartAisle™ standard



FREE-STANDING

Features:

- Flexible fitting to cabinets with non-standard dimensions
- For cabinets and applications that are swapped out on rotation
- Can be combined with SmartAisle™ standard



SWITCHTUBES

Features:

- No hot spots
- Adequate airflow
- Can be used in energy-efficient data-center



SmartAisle™ Containment Standard

Containment Solution from Emerson Network Power

The SmartAisle™ standard product range consists of flexible, adaptable and user-friendly components.

The individual components equate the tolerances of the racks, which are not usually installed with millimeter precision. The system fits not only onto Knürr racks but also onto most commercially available racks. The racks do not need to be installed in pairs. The top panels are transparent to allow use of the available room lighting.

The standard top elements are ready for the patented SmartAisle™ controller.

Different door systems are available – hinged doors and sliding doors. Hinged or swing doors are better in terms of safety and emergency exits. On the other hand, sliding doors take up less space.

Standard product range

- Aisle width 1,200 / 1,500 and 1,800 mm
- Rack height 2,000 and 2,200 mm

Features

- Ideal for new data-centers and for retrofitting homogeneous cabinet aisles
- Industrial prefabrication makes for a highly economic solution
- Quick and easy to assemble on site

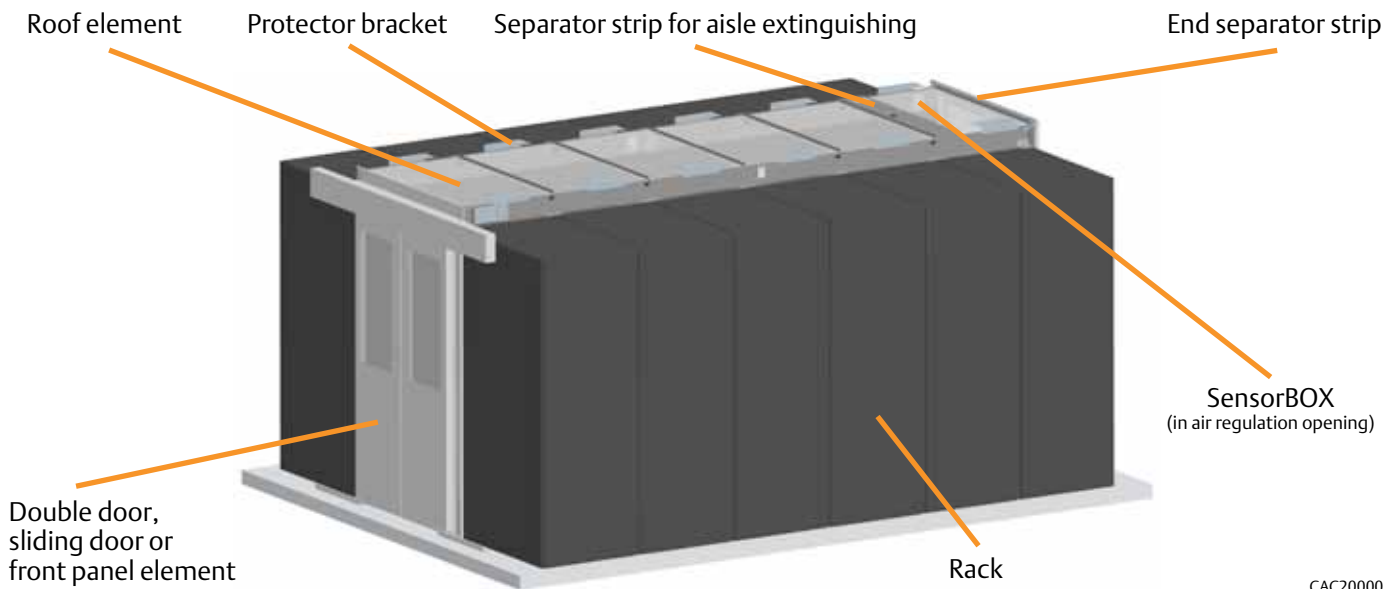




SmartAisle™ Containment Standard –
ideal for homogeneous layout
in the data-center

SmartAisle™ Containment Standard

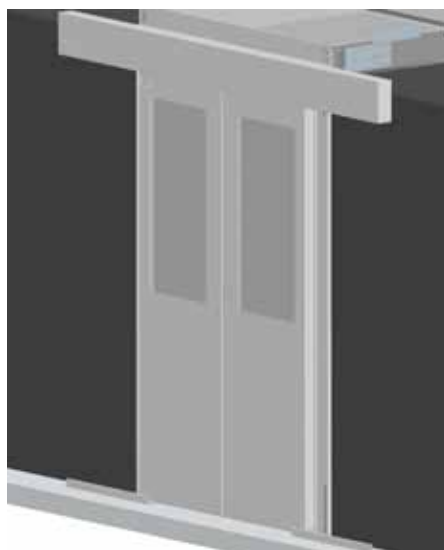
Configuration assistance



CAC20000

Necessary items for the cold aisle	Example
– Aisle width (standard dimensions 1,200, 1,500 and 1,800 mm +/- 50 mm)	Aisle width (AW) = 1,200 mm
– Rack height (standard dimensions 2,000 and 2,200 mm)	Rack height (H) = 2,000 mm
– Aisle length	Aisle length (L) = 4,800 mm
– Rack type	Knürr DCM® B800
– Color (light gray RAL 7035 or dark gray RAL 7021)	Dark gray RAL 7021

Options	Example	Item	
– Front door element (sliding door, double door, front panel)	Sliding door	1 piece	03.029.026.8
– Front door closer (mechanical, electric)	Electric door closer	1 piece	03.029.046.8
– Rear door element (sliding door, double door, front panel)	Double door	1 piece	03.029.021.8
– Rear door closer (mechanical, electric)	Mechanical door closer	<i>(integrated in double door)</i>	
– Roof element	Roof element L2400	3 pcs	03.029.129.8
	Roof element W800	2 pcs	03.029.126.8
– End separator strip	End separator strip AW 1200	1 pair	03.029.010.8
– SensorBOX	Yes	2 pcs	03.029.132.8
– Protector bracket	Yes	6 sets	03.029.041.8
– DCM® balancing sheet metal	Yes	3 sets	03.029.137.8
– Filler panel	No		
– Height panel	No		
– Sealing set	Yes (per rack)	2 sets	03.029.040.9
– Raised floor air barrier for cable entry	Yes	22 pcs	03.029.211.9
– Grate	Yes	28 pcs	03.029.090.8



CAC20001

SmartAisle™ Sliding Door prepared for automatic door closers

- For cold aisle containment for aisle widths: 1,200 / 1,500 / 1,800 mm (+/- 50 mm)
- Quick and easy mounting
- Suitable for Miracel® and DCM® racks and most racks of other manufacturers

■ Clear door opening

Width: at least 1,050 mm
Height: 2,080 mm

■ Material

Door elements: sheet steel
Windows: single safety glass panel
Brush strips: polyamide (UL94 HF-1)

■ Finish

Final digit of order number .1:
Powder-coated texture, RAL 7035,
light gray
Final digit of order number .8:
Powder-coated texture, RAL 7035
dark gray

■ Supply schedule

1 frame structure
2 doors
2 floor guides
Covers
Sealing material
Mounting material

■ Supplied as

Flat-packed kit

■ Please note

The required closers (electric or mechanical) should be ordered for this!

W/L	H	D	AW	For rack type	Order no.	UP
2,000			1,200		03.029.026.X	1 set
2,200			1,200		03.029.027.X	1 set
2,000			1,500		03.029.061.X	1 set
2,200			1,500		03.029.062.X	1 set
2,000			1,800		03.029.066.X	1 set
2,200			1,800		03.029.067.X	1 set



CAC20004



CAC20005

Electric Closing mechanism for Sliding Door

- Suitable for SmartAisle™ sliding door
- Increases energy efficiency as doors are closed automatically
- Opens with “push & go”
- Closes with “push & go” or automatically (0 ... 30 seconds)
- Opener/closer contact for control (e.g. fire alarm system)

■ Material

Sheet steel

■ Finish

Final digit of order number .1:
Powder-coated texture, RAL 7035,
light gray
Final digit of order number .8:
Powder-coated texture, RAL 7035
dark gray

■ Supply schedule

1 electric drive
1 cover
Various mounting brackets
Mounting material

■ Technical data

Power supply: 230 V / 50-60 Hz
Opening speed: 0.4 m/s
Closing speed: 0.2 m/s
Automatic closing time setting: 0...30 s
Force: 30 N

■ Supplied as

In units

W/L	H	D	AW	For rack type	Order no.	UP
					03.029.046.X	1 set

Dimensions in mm: W= width
H = height
D = depth
L = length
AW = aisle width
U = standard height unit
1U = 44.45 mm
UP = unit of packaging
kg = weight

Conversion: 1 mm = 0.03937 inch 1 kg = 2.2046 pounds

SmartAisle™ Containment Standard



CAC20006



CAC20007

Mechanical Closing mechanism for Sliding Door

- Suitable for SmartAisle™ sliding door
- Increases energy efficiency as doors are closed automatically
- Retaining function for open door

Material

Sheet steel

Finish

Final digit of order number .1:
Powder-coated texture, RAL 7035, light gray
Final digit of order number .8:
Powder-coated texture, RAL 7035 dark gray

Supply schedule

2 sets of gas pressure springs
1 cover
Various mounting brackets
Mounting material

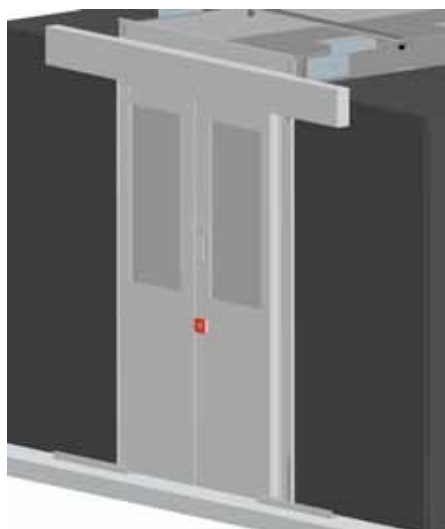
Technical data

Force: 20 N

Supplied as

In units

W/L	H	D	AW	For rack type	Order no.	UP
					03.029.047.X	1 set



CAC20002



CAC20003

SmartAisle™ Sliding Door with access control

- For cold aisle containment for aisle widths: 1,200 / 1,500 / 1,800 mm (+/- 50 mm)
- Quick and easy mounting
- Suitable for Miracel® and DCM® racks and most racks of other manufacturers
- Safe closing through magnets; the door can be opened manually with little effort if there is a power failure
- Access control with keypad as standard (other systems possible in the respective project)
- Button inside for normal exit
- VdS-approved emergency switch inside for in case of emergency; height of the switch is under 1 meter
- VdS-approved emergency switch outside for rescue
- Door contact switch for monitoring "door open – door closed"

Clear door opening

Width: at least 1,050 mm
Height: 2,080 mm

Material

Door elements: sheet steel
Windows: single safety glass panel
Brush strips: polyamide (UL94 HF-1)

Finish

Final digit of order number .1:
Powder-coated texture, RAL 7035, light gray
Final digit of order number .8:
Powder-coated texture, RAL 7035 dark gray

Supply schedule

1 frame structure
2 doors
2 floor guides
1 Rack Monitoring System
Electric closing
Covers
Sealing material
Mounting material

Supplied as

Flat-packed kit

W/L	H	D	AW	For rack type	Order no.	UP
	2,000		1,200		03.029.029.X	1 set
	2,200		1,200		03.029.029.X	1 set

Dimensions in mm: W= width
H = height
D = depth
L = length
AW = aisle width
U = standard height unit
1U = 44.45 mm
UP = unit of packaging
kg = weight

Conversion: 1 mm = 0.03937 inch 1 kg = 2.2046 pounds

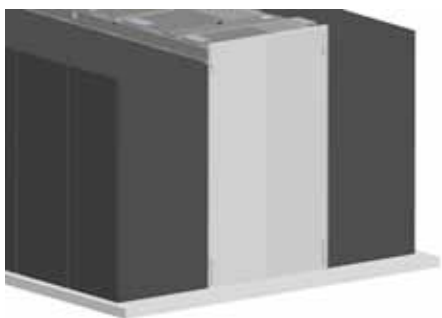


CAC20008

SmartAisle™ Double Door with automatic door closer

- For cold aisle containment for aisle widths: 1,200 / 1,500 / 1,800 mm (+/- 50 mm)
 - Quick and easy mounting
 - Suitable for Miracel® and DCM® racks and most racks of other manufacturers
 - Integrated automatic mechanical door closer (opening angle 180°, mounting bracket approx. 120°, from approx. 100° automatic closing)
- **Clear door opening**
Width: 1,200 mm
Height: 2,100 mm (for rack height 2,000 mm);
2,300 mm (for rack height 2,200 mm)
 - **Material**
Door frame: aluminum
Door elements: sheet steel
Windows: single safety glass panel
Brush strips: polyamide (UL94 HF-1)
 - **Finish**
Final digit of order number .1:
Powder-coated texture, RAL 7035, light gray
Final digit of order number .8:
Powder-coated texture, RAL 7035 dark gray
 - **Supply schedule**
1 door frame
2 doors
3 design covers
2 door closers
Mounting material
 - **Supplied as**
Flat-packed kit

W/L	H	D	AW	For rack type	Order no.	UP
	2,000		1,200		03.028.021.X	1 set
	2,200		1,200		03.028.022.X	1 set
	2,000		1,500		03.028.041.X	1 set
	2,200		1,500		03.028.042.X	1 set
	2,000		1,800		03.028.046.X	1 set
	2,200		1,800		03.028.047.X	1 set



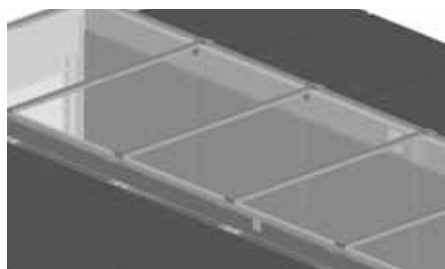
CAC20009

SmartAisle™ Front Panel Element

- For cold aisle containment for aisle widths: 1,200 / 1,500 / 1,800 mm (+/- 50 mm)
 - Alternative to a cold aisle door
 - Quick and easy mounting
 - Suitable for Miracel® and DCM® racks and most racks of other manufacturers
- **Material**
Sheet steel
 - **Finish**
Final digit of order number .1:
Powder-coated texture, RAL 7035, light gray
Final digit of order number .8:
Powder-coated texture, RAL 7035 dark gray
 - **Supply schedule**
1 bracing bracket
2 to 4 panel elements
Mounting material
 - **Supplied as**
Flat-packed kit

W/L	H	D	AW	For rack type	Order no.	UP
	2,000		1,200		03.029.031.X	1 set
	2,200		1,200		03.029.032.X	1 set
	2,000		1,500		03.029.034.X	1 set
	2,200		1,500		03.029.035.X	1 set
	2,000		1,800		03.029.037.X	1 set
	2,200		1,800		03.029.038.X	1 set

SmartAisle™ Containment Standard



CAC20010

SmartAisle™ Roof Element

- For cold aisle containment for aisle widths: 1,200 / 1,500 / 1,800 mm (+/- 50 mm)
- Quick and easy mounting
- Suitable for Miracel® and DCM® racks and most racks of other manufacturers
- With rubber sleeves for cable routing
- Plexiglas panel with low fire load and low smoke generation (optionally with compound safety glass)
- Plexiglas panels can be quickly and easily removed
- Prepared for SensorBox for energy-efficient operation of the recirculated-air cooling devices and for preventing hot spots

■ Clear aisle height

Rack height 2,000 mm: 2,150 mm
Rack height 2,200 mm: 2,350 mm

■ Material

Angular extrusion, cross brace: sheet steel
Plexiglas panel: halogen-free plexiglas

■ Finish

Final digit of order number .1:
Powder-coated texture, RAL 7035,
light gray

Final digit of order number .8:
Powder-coated texture, RAL 7035
dark gray

■ Supply schedule

2 angular extrusions with air regulation opening
1 separator strip at W300/600/800,
3 separator strips at L2400
1 plexiglas panel at W300/600/800
3 plexiglas panels at L2400
2 angular extrusion plates
Mounting material

■ Supplied as

Flat-packed kit

■ IMPORTANT

When used with Knürr DCM® racks, please also order suitable balancing sheet metals!

■ Please note

The appropriate number of SensorBOXes to regulate the recirculating coolers should also be ordered!

W/L	H	D	AW	For rack type	Order no.	UP
300			1,200		03.029.120.X	1 set
600			1,200		03.029.123.X	1 set
800			1,200		03.029.126.X	1 set
2,400			1,200		03.029.129.X	1 set
300			1,500		03.029.121.X	1 set
600			1,500		03.029.124.X	1 set
800			1,500		03.029.127.X	1 set
2,400			1,500		03.029.130.X	1 set
300			1,800		03.029.122.X	1 set
600			1,800		03.029.125.X	1 set
800			1,800		03.029.128.X	1 set
2,400			1,800		03.029.131.X	1 set



CAC20011

SmartAisle™ End Separator Strip

- For cold aisle containment for aisle widths: 1,200 / 1,500 / 1,800 mm (+/- 50 mm)
- Quick and easy mounting
- To connecting to the door element or front panel element

■ **Material**
Sheet steel

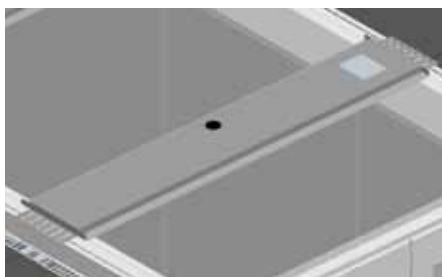
■ **Finish**
Final digit of order number .1:
Powder-coated texture, RAL 7035,
light gray

Final digit of order number .8:
Powder-coated texture, RAL 7035
dark gray

■ **Supply schedule**
2 end separator strips
Mounting material

■ **Supplied as**
In units

W/L	H	D	AW	For rack type	Order no.	UP
			1,200		03.029.010.X	1 pair
			1,500		03.029.011.X	1 pair
			1,800		03.029.012.X	1 pair



CAC20012

SmartAisle™ Separator Strip for Aisle Extinguishing for SmartAisle™ roof element

- For gas extinguishing in the cold aisle
- With rubber sleeve for inserting the piping or the nozzles into the cold aisle
- Possibility to screw in the fastening for the piping on the cold aisle containment
- Prepared for SensorBox for the energy-efficient operation of the recirculated-air cooling devices and for preventing hot spots

■ **Material**
Sheet steel

■ **Finish**
Final digit of order number .1:
Powder-coated texture, RAL 7035,
light gray
Final digit of order number .8:
Powder-coated texture, RAL 7035
dark gray

■ **Supply schedule**
1 separator strip for aisle extinguishing
Mounting material

■ **Supplied as**
Flat-packed kit

W	H	D	AW	For rack type	Order no.	UP
200			1,200		03.029.115.X	1 set
200			1,500		03.029.116.X	1 set
200			1,800		03.029.117.X	1 set

Dimensions in mm: W= width
H = height
D = depth
L = length
AW = aisle width
U = standard height unit
1U = 44,45 mm
UP = unit of packaging
kg = weight

Conversion: 1 mm = 0.03937 inch 1 kg = 2.2046 pounds

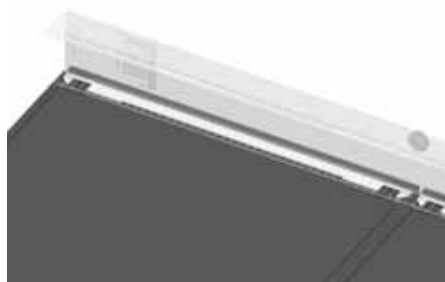
SmartAisle™ Containment Standard



CAC20013



CAC20014

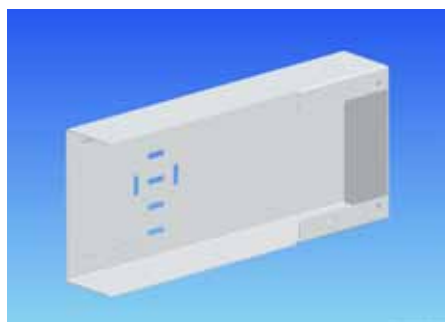


CAC20015

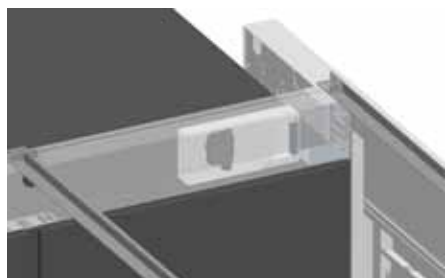
SmartAisle™ DCM® Balancing Sheet Metal for use with Knürr DCM® racks

- For equalizing the height between DCM® rack and cold aisle containment
- **Material**
Sheet steel
- **Finish**
Final digit of order number .1:
Powder-coated texture, RAL 7035, light gray
Final digit of order number .8:
Powder-coated texture, RAL 7035 dark gray
- **Supply schedule**
1 balancing sheet metal
- **Supplied as**
Flat-packed kit

W/L	H	D	AW	For rack type	Order no.	UP
300				DCM®	03.029.134.X	1 set
600				DCM®	03.029.135.X	1 set
800				DCM®	03.029.137.X	1 set
1,000				DCM®	03.029.139.X	1 set



CAC20016

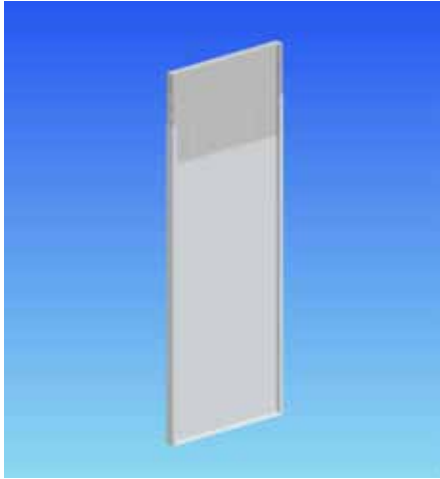


CAC20017

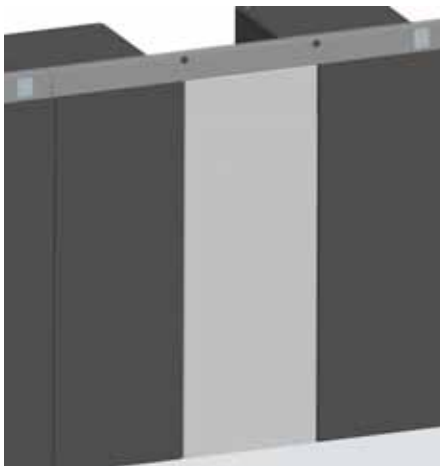
SmartAisle™ SensorBOX for SmartAisle™ roof elements

- Suitable for air- regulation opening of the roof elements
- Conforms to a patented regulation principle for the energy-efficient operation of cooling systems
- Ready for Liebert® temperature sensor
- Can be used for different sensors
- **Material**
Sheet steel
- **Finish**
Final digit of order number .1:
Powder-coated texture, RAL 7035, light gray
Final digit of order number .8:
Powder-coated texture, RAL 7035 dark gray
- **Supply schedule**
1 SensorBOX
Mounting material
- **Supplied as**
Flat-packed kit

W/L	H	D	AW	For rack type	Order no.	UP
					03.029.132.X	1 set



CAC20018



CAC20019

SmartAisle™ Filler Panel

for separating areas in the suite without racks

- For separating areas in the suite without racks
- Quick and easy mounting
- Height-variable; applicable for "gross" rack heights from 1,990 to 2,220 mm
- More filler panels can be mounted side by side

■ Material

Sheet steel

■ Finish

Final digit of order number .1:
Powder-coated texture, RAL 7035,
light gray
Final digit of order number .8:
Powder-coated texture, RAL 7035
dark gray

■ Supply schedule

1 filler panel (two-piece)
Mounting material

■ Supplied as

Flat-packed kit

W/L	H	D	For rack type	Order no.	UP
300	2,000 / 2,200			03.029.055.X	1 set
600	2,000 / 2,200			03.029.056.X	1 set
800	2,000 / 2,200			03.029.058.X	1 set

Dimensions in mm: W= width
H = height
D = depth
L = length
AW = aisle width

U = standard height unit
1U = 44,45 mm
UP = unit of packaging
kg = weight

Conversion: 1 mm = 0.03937 inch 1 kg = 2.2046 pounds

SmartAisle™ Containment Standard



DCM20057



LUF20328

SmartAisle™ Height Panel

- For balancing the separation of the cold and hot areas in smaller racks

■ Material

Sheet steel

■ Finish

Final digit of order number .1:
Powder-coated texture, RAL 7035,
light gray
Final digit of order number .8:
Powder-coated texture, RAL 7021,
dark gray

■ Supply schedule

1 height panel
Mounting material

■ Supplied as

Flat-packed kit

■ Please note

For several height panels positioned beside one another, please ask for the appropriate angular extrusion plates.

W	H	D	AW	For rack type	Order no.	UP
300	221			DCM®	03.029.140.X	1 set
300	200			Miracel®	03.029.050.X	1 set
600	221			DCM®	03.029.141.X	1 set
600	200			Miracel®	03.029.051.X	1 set
800	221			DCM®	03.029.143.X	1 set
800	200			Miracel®	03.029.052.X	1 set
1,000	221			DCM®	03.029.145.X	1 set



DCM20045



LUF20327

SmartAisle™ Protector Bracket for Roof Element

- Prevents plexiglas panels from lifting up with excess pressure
- Enables safe pressure balance in the event of a fault or if a fire is being extinguished

■ Material

Sheet steel

■ Finish

Final digit of order number .1:
Powder-coated texture, RAL 7035,
light gray
Final digit of order number .8:
Powder-coated texture, RAL 7021,
dark gray

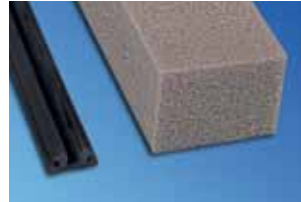
■ Supply schedule

1 pair of protector brackets
Mounting material

■ Supplied as

Flat-packed kit

W/L	H	D	AW	For rack type	Order no.	UP
4,800					03.029.041.X	1 set



LUF20336

SmartAisle™ Sealing Set for 4.8 meter aisle length

- Suitable for installation in Miracel® rack
- For sealing the leveling area between the floor and rack
- For sealing Miracel® rack suites without side panels

■ Material / color

Foam: PUR-Ether UL94 HF-1, black
Cover extrusion: PVC extruder, black

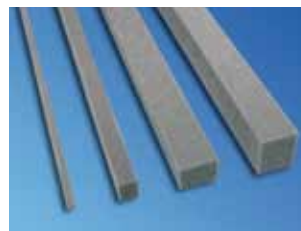
■ Supply schedule

10 meters of foam 40 x 25 mm
31 meter cover extrusion

■ Supplied as

Flat-packed kit

W/L	H	D	AW	For rack type	Order no.	UP
4,800				Miracel®	03.029.040.9	1 set



DCM20047

SmartAisle™ Sealing Material

- Suitable for sealing openings (e.g. leveling areas between floor and rack, between racks, etc.)

■ Material / color

PUR-Ether UL94 HF-1, black

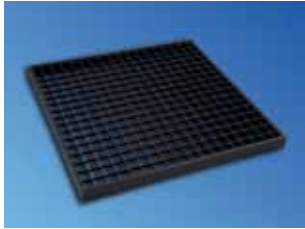
■ Supply schedule

5 x 2 meters of foam

■ Supplied as

Flat-packed kit

W/L	H	D	AW	Size	Order no.	UP
				40 x 40 (glued surface) mm	03.029.042.9	1 set
				20 x 20 (glued surface) mm	03.029.043.9	1 set
				5 x 10 (glued surface) mm	03.029.044.9	1 set
				25 x 40 (glued surface) mm	03.029.045.9	1 set



LUF20331

SmartAisle™ Grate for Raised Floor

- For use on raised floors
- Can be used with high heat loads and high requirements for cooling air per rack
- For energy-efficient operation of the recirculated air devices

■ Material

Zinc-passivated steel

■ Finish

Final digit of order number .1:

Powder-coated texture, RAL 7035, light gray

Final digit of order number .8:

Powder-coated texture, RAL 7021, dark gray

■ Standards

Produced in acc. with RAL-GZ 638

Load capacity according to DIN EN 12825

– on supports: deflection class 1A (2 kN)

and 2C (3kN); measurement plate center

– on supports and profiles:

deflection class 2A (3kN)

■ Supply schedule

1 raised floor grate

■ Technical data

Size 598 x 598 x 40 mm (WxLxH)

Free cross-section 88%

Max. surface load 50,000 N/m² with even distribution

Max. point load (on 200 x 200 mm area) 4,500 N

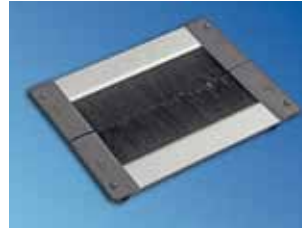
■ Supplied as

In units

■ Please note

Suitable for raised floors with 40 mm thick panels!

W	H	D	AW	For rack type	Order no.	UP
					03.029.090.X	1 unit



LUF20334

SmartAisle™ Raised Floor Air Barrier for cable entry

- For cable entry from the raised floor
- Sunk in to the raised floor, or can be used as superstructure
- Two-row tight brushes for pressure-resistant cold-hot separation
- For new breakouts; as superstructure for existing breakouts
- Two-piece – option to easily extend and upgrade
- The length can be easily shortened onsite (metal saw)
- Also suitable for cabling on the rack wall (U-shape, two-piece)
- Slot-in connection – additional threaded connection

■ Dimensions

03.028.211.9:

- External dimensions (270 mm x 220 mm)

- Usable cable entry (200 mm x 126 mm)

- Raised floor breakout (240 mm x 180 mm)

03.028.212.9:

- External dimensions (600 mm x 220 mm)

- Usable cable entry (530 mm x 126 mm)

- Raised floor breakout (570 mm x 180 mm)

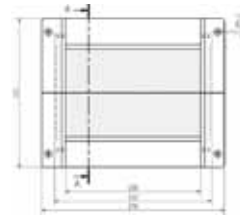
■ Supply schedule

1 pair of raised floor air barriers

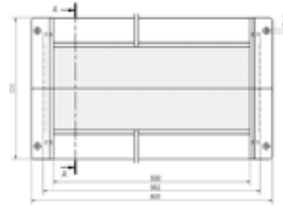
Mounting material

■ Supplied as

Flat-packed kit



LUF20301



LUF20302

W	H	D	U	D (max.) kg	Model	Order no.	UP
270	220				Length 270 mm	03.028.211.9	1 set
600	220				Length 600 mm	03.028.212.9	1 set

Dimensions in mm: W= width
H = height
D = depth
L = length
AW = aisle width

U = standard height unit
1U = 44.45 mm
UP = unit of packaging
kg = weight

Conversion: 1 mm = 0.03937 inch 1 kg = 2.2046 pounds

SmartAisle™ Containment Customized

Customized – Retrofitting Solution from Emerson Network Power



Data-centers are often the result of a structure that has developed over the course of many years.

Cabinets have different dimensions and are not always positioned in a line. Knürr offers this customized solution based on a profile construction that can be made on site to accommodate the data-center precisely.

With this solution, the dimensions are recorded on site and the profiles and panels for the enclosure are cut and assembled according to your requirements. The panels are normally cut away from the data-center in a designated area.

If possible, the customized elements are combined with standard components. The standard sliding or hinged doors are generally used. The standard top element is also sometimes used as the customized elements are only used for the gaps between the cabinets.

Features

- Precisely fitted to cabinets and cabinet positions
- Suitable for retrofitting non-homogenous data-centers
- Can be combined with SmartAisle™ standard





*SmartAisle™ Containment Customized –
adapts to specific conditions
in the data-center*

SmartAisle™ Containment Free-standing

Free-standing – Special Solution from Emerson Network Power



Free-standing

In many data-centers, what are known as "free-standing systems" are installed in addition to the server cabinets. These cabinets are often of non-standard dimensions and are regularly swapped out in line with a defined rotation schedule (usually one to three years).

Free-standing systems may include storage cabinets, cluster applications (e.g. IBM, SUN) or server cabinets (e.g. IBM, HP, SUN etc.). There are many reasons for delivering these as a complete package including cabinets. For storage applications, one of the main reasons is product liability. Cluster applications on the other hand are usually leased, while the reasons pertaining to server applications are often related to marketing.

The challenge with "SmartAisle™ for free-standing" is to construct a flexible cold aisle enclosure that allows a fast and modular exchange of free-standing systems.

The free-standing cold aisle enclosure solution is based on SmartAisle™ standard products and is used in combination with these elements. The panels for the free-standing solution can be customized in terms of both dimensions (height and width) according to the cabinet dimensions.

Features

- Flexible adjustment to cabinets with non-standard dimensions
- For racks and applications that are swapped out on rotation
- Can be combined with SmartAisle™ standard





SmartAisle™ Containment Free-standing –
for special applications
in the data-center

SmartAisle™ Containment SwitchTubes

SwitchTubes – Switch Cooling from Emerson Network Power

Cooling of switches

Servers draw in cold air for cooling from the front and blow out the heated air at the back. In contrast, switches generally suck in cold air from the side and blow the air out at the side or from the back. This leads to cooling problems in racks which have a consistent separation of warm and cold air. Special air-conduction systems are needed for switch applications in order to ensure a safe, energy-efficient solution.

The SmartAisle™ SwitchTube is a safe and flexible supplement to the entire SmartAisle™ range. Different standard products are available depending on the switch type.

Switches have special requirements.

Cooling / ventilation:

- Usually side-to-side airflow (right to left, left to right, left and right to back, ... and combinations of different directions)
 - Switches suck in hot air!
- Often high cooling capacity required (up to 10 kW per switch)

Maximum supply-air temperature:

- Maximum supply-air temperature is approx. 37- 40°C
 - Problems in environments with energy-efficient cold / hot air separation
 - Increased energy demand for cooling

Cabling:

- Large number of cables
- The fan unit is not blocked by cables, which enables repairs to be carried out during operation.
- Airflow should not be obstructed by cables.

Mechanics:

- Different heights (1U to approx. 24U)
- Different depths with different intake areas

Emerson Network Power offers a wide range of SwitchTubes for the most common switches on the market.

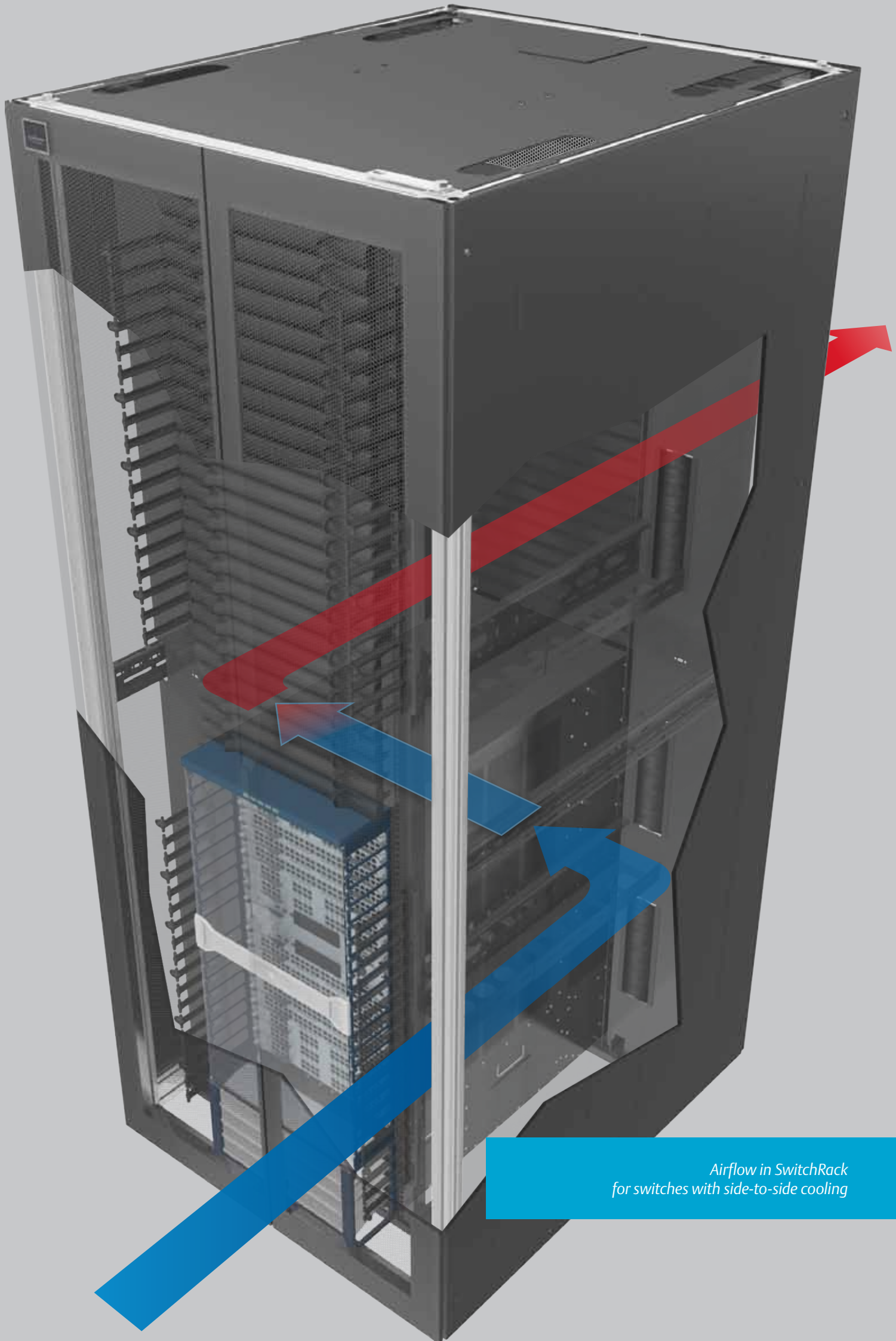
Features

- No hot spots
- Adequate airflow
- Allows use in energy-efficient data center

SwitchTubes – Controlled Cooling for Switches

Servers are usually cooled from front to back. This fits into the concept of a modern, energy-efficient data-center. However, the cooling direction of switches is mostly side-to-side. In this application, switches tend to suck in cold air from a warm area.

The SwitchTube enables the switch to receive air from the cold aisle, while hot air is guided into the hot aisle.



*Airflow in SwitchRack
for switches with side-to-side cooling*

SmartAisle™ Containment SwitchTubes



LUF20360

03.029.217.X

SmartAisle™ Switch 19"-Tube for cooling a core switch from the cold aisle

- For applications with and without raised floors
- Applicable to switches with side-to-side cooling for energy-efficient cooling
- Air inlet from the cold aisle (ideally with containment)
- Suitable for Knürr Miracel® and DCM® rack; rack width 800 mm
- Requires 3 or 6U of the 19" installation space
- Applicable to different switch heights
- Height variable installation in the rack possible
- INFO: cold-warm separation necessary in rack

Material

Tube: sheet steel
Sealing foam: PUR-Ether UL94 HF-1

Finish

Final digit of order number .1:
Powder-coated texture, RAL 7035, light gray
Final digit of order number .8:
Powder-coated texture, RAL 7035, dark gray

Supply schedule

2 intake drawers (for type 12-21U)
1 intake drawer (for type 7-12U / 4-6U)

1 height-adjustable air tube
Sealing foam
Mounting material

Supplied as

Flat-packed kit

IMPORTANT

Suitable for cooling a maximum of 5 kW heat load (at $\Delta T = 13$ K) per SwitchTube.

IMPORTANT

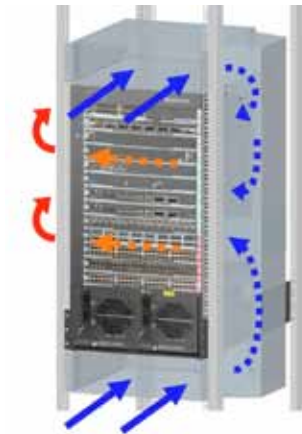
If there are many switches installed in the rack, one part of the front inlet perforated section is covered (since they are often very close to the front behind the front 19" extrusions).

IMPORTANT

May not be suitable for switches with different cooling directions.

Please note

Additional installations may be difficult due to existing cabling and accessory components.



LUF20379

03.029.217.X

W _{Rack}	H	D	Application	For rack type	Order no.	UP
800			Core-Switch 12-21 HE	Miracel®, DCM®	03.029.217.X	1 set
800			Core-Switch 12-21 HE	Miracel®, DCM®	03.029.218.X	1 set
800			Core-Switch 7-12 HE	Miracel®, DCM®	03.029.213.X	1 set
800			Core-Switch 7-12 HE	Miracel®, DCM®	03.029.215.X	1 set
800			Core-Switch 4-6 HE	Miracel®, DCM®	03.029.214.X	1 set



LUF20358

03.029.213.X



LUF20377

03.029.215.X



LUF20359

03.029.214.X



LUF20375

03.029.213.X



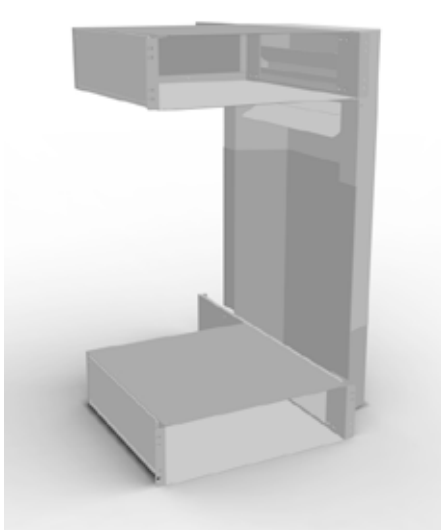
LUF20378

03.029.215.X



LUF20376

03.029.214.X



LUF20354

03.029.218.X



LUF20380

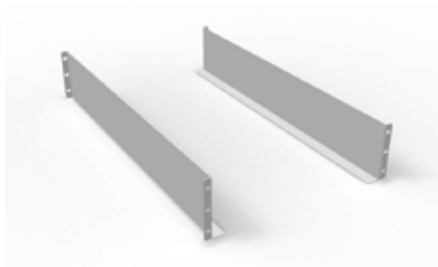
03.029.218.X

Item no.	Switch height [U]	Cooling max.	Max. intake area regarding depth [mm] (distance to the 19" area)	Suitable for e.g.
03.029.217.X	12-21	approx. 7 kW ($\Delta T=13$ K) per SwitchTube	460	CISCO Catalyst 6506(-E), 6509(-E), 6513, MDS 9509 Director
03.029.218.X	12-21	approx. 7 kW ($\Delta T=13$ K) per SwitchTube	600	Cisco Nexus 7009
03.029.213.X	7-12	approx. 3 kW ($\Delta T=13$ K) per SwitchTube	320	CISCO Catalyst 4503(-E), 4506(-E), 4507R(-E), 4510R(-E)
03.029.215.X	7-12	approx. 3 kW ($\Delta T=13$ K) per SwitchTube	600	Cisco Nexus 7004
03.029.214.X	4-6	approx. 3 kW ($\Delta T=13$ K) per SwitchTube	550	CISCO Catalyst 6503(-E), 6504(-E)

Dimensions in mm: W= width
 H = height
 D = depth
 L = length
 U = standard height unit
 1U = 44,45 mm
 UP = unit of packaging
 kg = weight
Conversion: 1 mm = 0.03937 inch
 1 kg = 2.2046 pounds



SmartAisle™ Containment SwitchTubes



LUF20364



LUF20365



LUF20366

Chassis Runner Tube D740

to support switches when installed in the rack

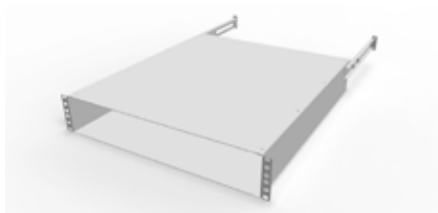
- Supports the weight of the switch during installation and securing in the rack
- Can be used with SmartAisle™ Switch 19" Tubes 12-21U
- Suitable for insertion depth 740 mm
- Suitable for all 19" extrusions
- **Suitable e.g. for: CISCO Catalyst 6506(-E), MDS 9509 Director**

■ **Material / finish**
Sheet steel 2.0 mm, zinc-passivated

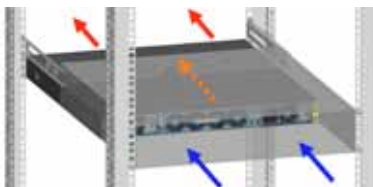
■ **Supply schedule**
2 chassis runners
Mounting material

■ **Supplied as**
In pairs

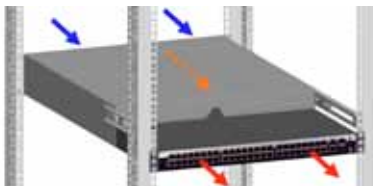
W	U	D _{Rack}	For insertion depth	Order no.	UP
130	3	from 900	740	03.029.230.7	1 pair



LUF20372



LUF20373



LUF20374

SmartAisle™ SwitchTube 1U back-to-front for 1U high switches

- For 1U switches with "back-to-front" cooling
- Can be applied flexibly for different switch depths
- Suitable for different insertion depths
- Suitable for Knürr Miracel® and DCM® rack
- **Suitable e.g. for Enterasys SSA 180**

■ **Material**
Tube: sheet steel
Sealing foam: PUR-Ether UL94 HF-1

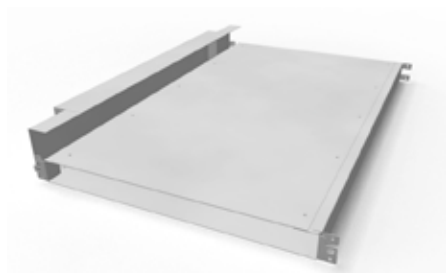
■ **Finish**
Final digit of order number .1:
Powder-coated texture, RAL 7035, light gray
Final digit of order number .8:
Powder-coated texture, RAL 7035 dark gray

■ **Supply schedule**
1 intake drawer
2 rear support brackets
Sealing foam
Edge protection
Mounting material

■ **Supplied as**
Flat-packed kit

■ **Please note**
Additional installations may be difficult due to existing cabling and accessory components.

W	H	U	For insertion depth	For rack type	Order no.	UP
450	87.5	2	600 - 740		03.029.212.X	1 unit



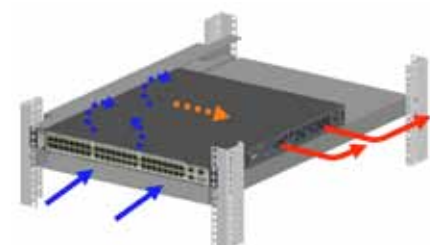
LUF20356

03.029.210.X



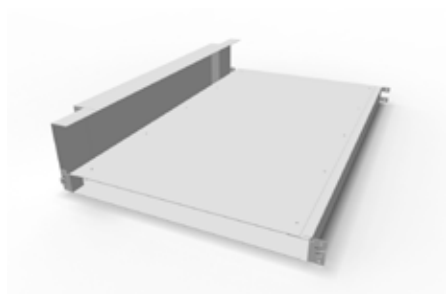
LUF20368

03.029.210.X



LUF20369

03.029.210.X



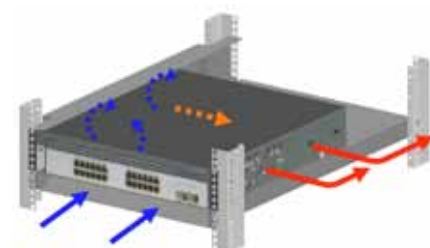
LUF20357

03.029.211.X



LUF20370

03.029.211.X



LUF20371

03.029.211.X

SmartAisle™ SwitchTube 1U / 2U for 1U / 2U high switches

- For 1U or 2U switches with side-to-side cooling
- Can be used in racks with "back-to-front" cooling
- Can be applied flexibly for different switch depths
- Front or rear mounting possible
- Suitable for different cooling directions (left to right, right to left or right and left to back)
- Suitable for insertion depth of 740 mm
- Suitable for Knürr Miracel® und DCM® server extrusion
- Suitable for rack widths 600, 700, 800 and 1,000
- Suitable e.g. for CISCO Catalyst 3750, Juniper EX3200, Juniper EX4200

Material

Tube: sheet steel
Sealing foam: PUR-Ether UL94 HF-1

Finish

Final digit of order number .1:
Powder-coated texture, RAL 7035, light gray
Final digit of order number .8:
Powder-coated texture, RAL 7035 dark gray

Supply schedule

1 intake drawer
2 side air ducts
1 side cover
Sealing foam
Mounting material

Supplied as

Flat-packed kit

Please note

Additional installations may be difficult due to existing cabling and accessory components.

W	H	U	For insertion depth	For rack type	Order no.	UP
440	43,6	1	740		03.029.210.X	1 unit
440	43,6	2	740		03.029.211.X	1 unit

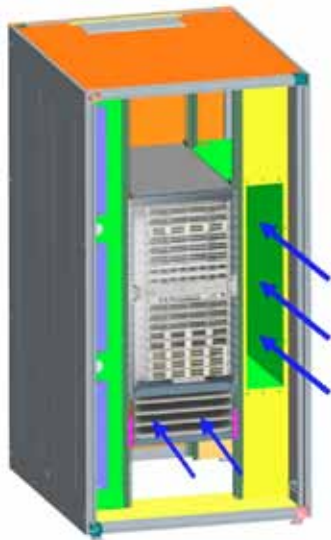
Dimensions in mm: W= width
H = height
D = depth
L = length

U = standard height unit
1U = 44,45 mm
UP = unit of packaging
kg = weight

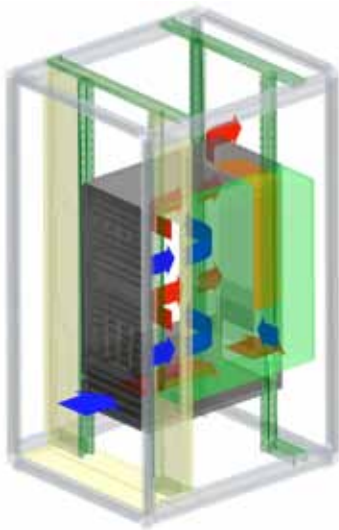
Conversion: 1 mm = 0.03937 inch

1 kg = 2.2046 pounds

SmartAisle™ Containment SwitchTubes



LUF20362



LUF20363

SmartAisle™ SwitchRack for CISCO Nexus 7018

- For assembling a CISCO Nexus 7018 at a height of 7U to 31U
- Base DCM® rack
- Rack width of 1,000 mm according to the CISCO specification for adequate cold air
- Avoids hot spots (recirculation of air)
- Front area depth of 200 mm for orderly cabling
- Panels for separating cold and warm air for an energy-efficient operation
- Cold air intake from the cold aisle

Material / finish

- Basic frame: extruded aluminium, polished
- Corner piece: die-cast aluminium, polished
- Doors: sheet steel, powder-coated texture
- Covers: zinc-passivated sheet steel, powder-coated texture
- Foam: PUR-Ether UL94 HF-1

Color

- Final digit of order number .1:
Visible surface of covers
RAL 7035 light gray
- Final digit of order number .8:
Visible surface of covers
RAL 7021 dark gray

Supply schedule

- 1 basic frame
- 4 19" server extrusions, sheet steel incl. U marking
- 2 side panels with quick-release fasteners
- 1 top cover with cable entry (three-piece sliding plates, can also be opened completely)
- 1 front door, double, perforated, sheet steel, with handle and mounting for cylinder lock
- 1 rear door, double, perforated, sheet steel, with handle and mounting for cylinder lock
- 1 complete air separation (on the left: cover with 3x 2U 19" cutouts, right side with air tube)
- 4 leveling feet
- 1 complete earthing set (VDE 0100)

Supplied as

Assembled

Please note

Mounting adapters for 19" server extrusion should also be ordered for mounting Knürr accessories (01.147.640.9).

W	H	D	U	Front depth	Insertion depth	Rack type	Order no.	UP
1,000	2,000	1,200	42	200	740	DCM®	03.029.222.X	1 unit

Dimensions in mm: W= width
H = height
D = depth
L = length

U = standard height unit
1U = 44.45 mm
UP = unit of packaging
kg = weight

Conversion: 1 mm = 0.03937 inch 1 kg = 2.2046 pounds



LUF20355



LUF20367

SmartAisle™ SwitchTube Raised Floor for cooling a core switch from a raised floor

- Suitable for switches with side-to-side cooling for energy-efficient cooling
- Air inlet from the raised floor
- Suitable for Knürr Miracel® rack; rack width 800 mm (NOT for DCM® rack)
- Suitable for different switch heights
- Height-variable assembly possible in the rack; tool-free blanking panels to cover the areas outside switches
- Base area tube: 420 cm²
- Cut-out in the raised floor (min./max.): 355/410 x 127/162 mm
- INFO: cold-warm separation necessary in rack
- INFO: for max. switch intake depth of 460 mm (distance from the 19" area)
- **Suitable e.g. for CISCO Catalyst 6509(-E), Catalyst 6513, Catalyst 6506(-E), MDS 9509 Director, HP ProCurve 8212**

Material

Tube: sheet steel
Sealing foam: PUR-Ether UL94 HF-1

Finish

Final digit of order number .1:
Powder-coated texture, RAL 7035, light gray
Final digit of order number .8:
Powder-coated texture, RAL 7035 dark gray

Supply schedule

1 tube with blanking panels (1U, 3U)
1 bottom plate
Sealing material
Mounting material

Supplied as

Flat-packed kit

IMPORTANT

Suitable for cooling a maximum 5 kW heat load (at $\Delta T = 13$ K) per SwitchTube.

IMPORTANT

The tube covers one part of the front inlet perforation section when many switches are installed in the rack (as they are often close to the front behind the front 19" extrusions).

IMPORTANT

May not be suitable for switches with different cooling directions.

IMPORTANT

The highest 3U in the rack cannot be used for cooling.

Please note

Additional installations may be difficult due to existing cabling and accessory components.

W	H	D	Item	For rack type	Order no.	UP
800	2,000	Tube	Miracel®		03.029.200.X	1 set
800	2,200	Tube	Miracel®		03.029.202.X	1 set

About Emerson Network Power

Emerson Network Power, a business of Emerson (NYSE:EMR), delivers software, hardware and services that maximize availability, capacity and efficiency for data-centers, healthcare providers and industrial facilities. A trusted industry leader in smart infrastructure technologies, Emerson Network Power provides innovative data-center infrastructure management solutions that bridge the gap between IT and facility management and deliver efficiency and uncompromised availability regardless of capacity demands. Our solutions are supported around the world by local Emerson Network Power service technicians. Learn more about Emerson Network Power products and services at:

www.EmersonNetworkPower.eu

Emerson Network Power Global Headquarters

1050 Dearborn Drive
P.O. Box 29186
Columbus, OH 43229, USA
T +1 614 8880246

Emerson Network Power EMEA

Mariakirchner Straße 38
94424 Arnstorf, Germany
T +49 8723 27 0
F +49 8723 27 154
info@knuerr.com

Emerson Network Power United Kingdom

George Curl Way
Southampton
SO18 2RY, UK
T +44 (0)23 8061 0311
F +44(0)23 8061 0852
UK.Enquiries@Emerson.com

While every precaution has been taken to ensure the accuracy and completeness of this brochure, Emerson Network Power and/or its affiliates makes no representations or warranty about its accuracy, reliability, completeness, or timeliness and disclaims any and all liability for damages resulting from the use of this information or for any errors or omissions.

©2013 Emerson Network Power. All rights reserved.
Specifications subject to change without notice.
MKA4LOUKSAC